

LEGEND:

PROPOSED ONGAR - BARNHILL DISTRIBUTOR ROAD PEDESTRIAN / CYCLIST ROUTES

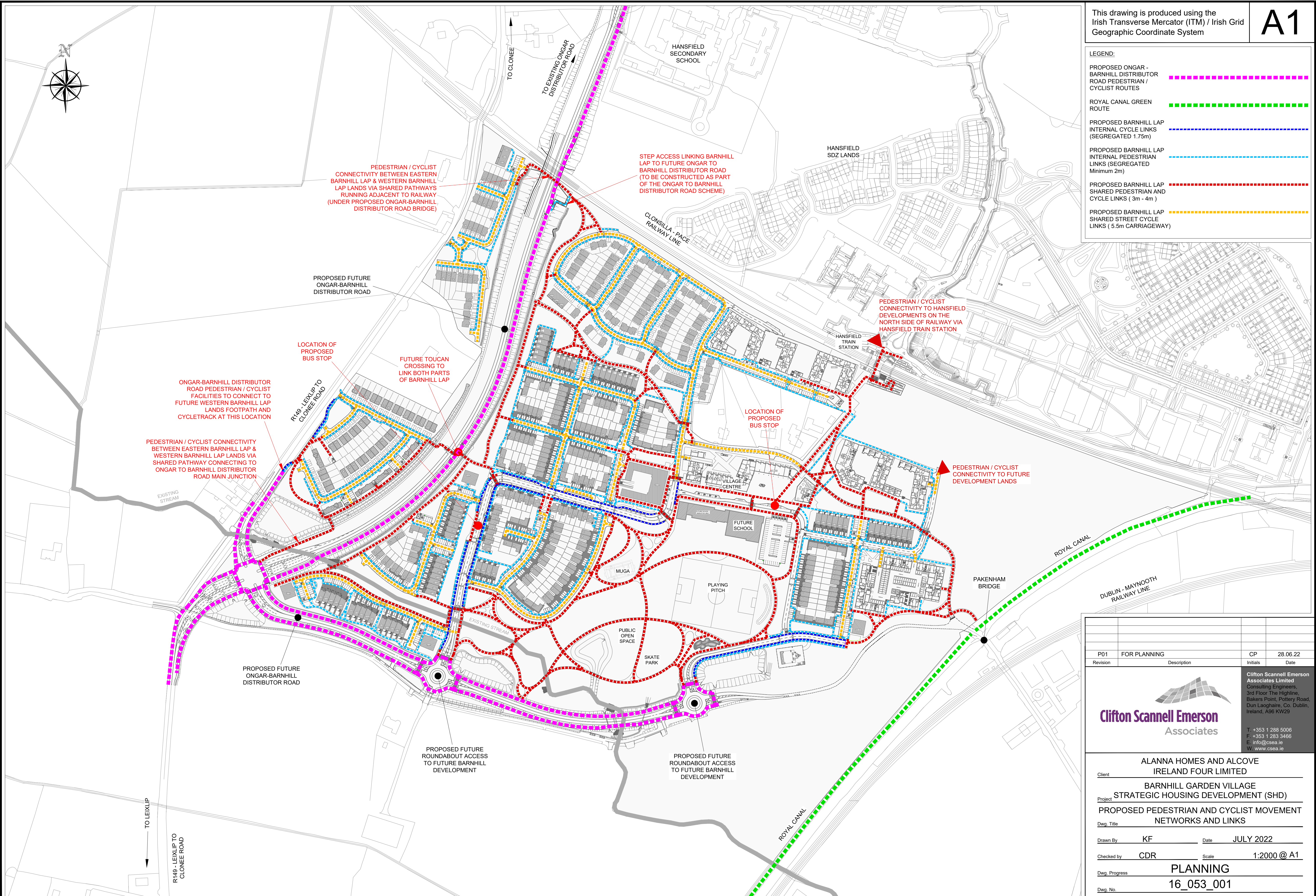
ROYAL CANAL GREEN ROUTE

PROPOSED BARNHILL LAP INTERNAL CYCLE LINKS (SEGREGATED 1.75m)

PROPOSED BARNHILL LAP INTERNAL PEDESTRIAN LINKS (SEGREGATED Minimum 2m)

PROPOSED BARNHILL LAP SHARED PEDESTRIAN AND CYCLE LINKS (3m - 4m)

PROPOSED BARNHILL LAP SHARED STREET CYCLE LINKS (5.5m CARRIAGEWAY)



P01	FOR PLANNING	CP	28.06.22
Revision	Description	Initials	Date

Clifton Scannell Emerson Associates

Clifton Scannell Emerson Associates Limited
Consulting Engineers,
3rd Floor The Highline,
Bakers Point, Pottery Road,
Dun Laoghaire, Co. Dublin,
Ireland, A96 KW29

T: +353 1 288 5006
F: +353 1 283 3466
E: info@csea.ie
W: www.csea.ie

ALANNA HOMES AND ALCOVE
IRELAND FOUR LIMITED

BARNHILL GARDEN VILLAGE
STRATEGIC HOUSING DEVELOPMENT (SHD)

PROPOSED PEDESTRIAN AND CYCLIST MOVEMENT
NETWORKS AND LINKS

Drawn By: KF Date: JULY 2022

Checked by: CDR Scale: 1:2000 @ A1

Dwg. Progress: PLANNING

Dwg. No.: 16_053_001