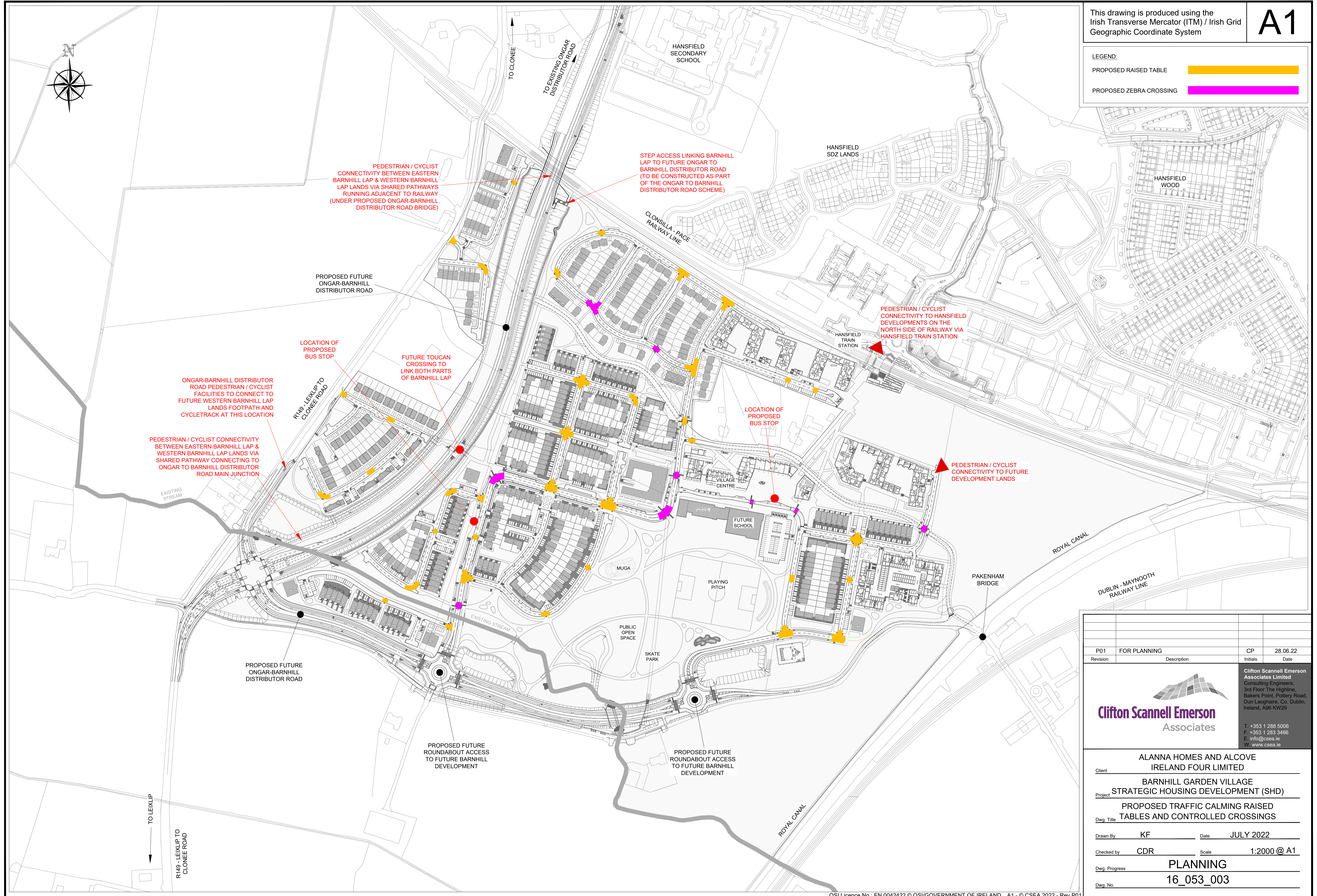
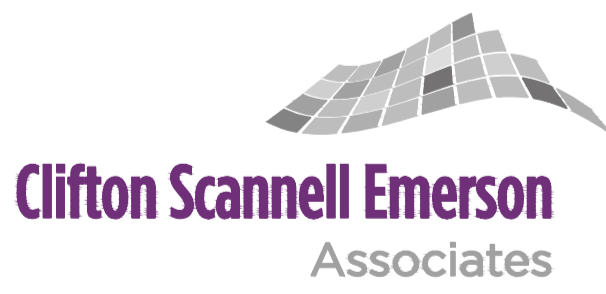


LEGEND:

PROPOSED RAISED TABLE

PROPOSED ZEBRA CROSSING



P01	FOR PLANNING	CP	28.06.22
Revision	Description	Initials	Date
 <b>Clifton Scannell Emerson Associates</b>		Clifton Scannell Emerson Associates Limited Consulting Engineers, 3rd Floor, The Highline, Bakers Point, Pottary Road, Dun Laoghaire, Co. Dublin, Ireland, A96 KW29 T: +353 1 288 5006 F: +353 1 283 3466 E: info@csea.ie W: www.csea.ie	
Client	ALANNA HOMES AND ALCOVE IRELAND FOUR LIMITED		
Project	BARNHILL GARDEN VILLAGE STRATEGIC HOUSING DEVELOPMENT (SHD)		
Dwg. Title	PROPOSED TRAFFIC CALMING RAISED TABLES AND CONTROLLED CROSSINGS		
Drawn By	KF	Date	JULY 2022
Checked by	CDR	Scale	1:2000 @ A1
Dwg. Progress	<b>PLANNING</b>		
Dwg. No.	<b>16_053_003</b>		